



HAWAII HEALTH SYSTEMS
C O R P O R A T I O N

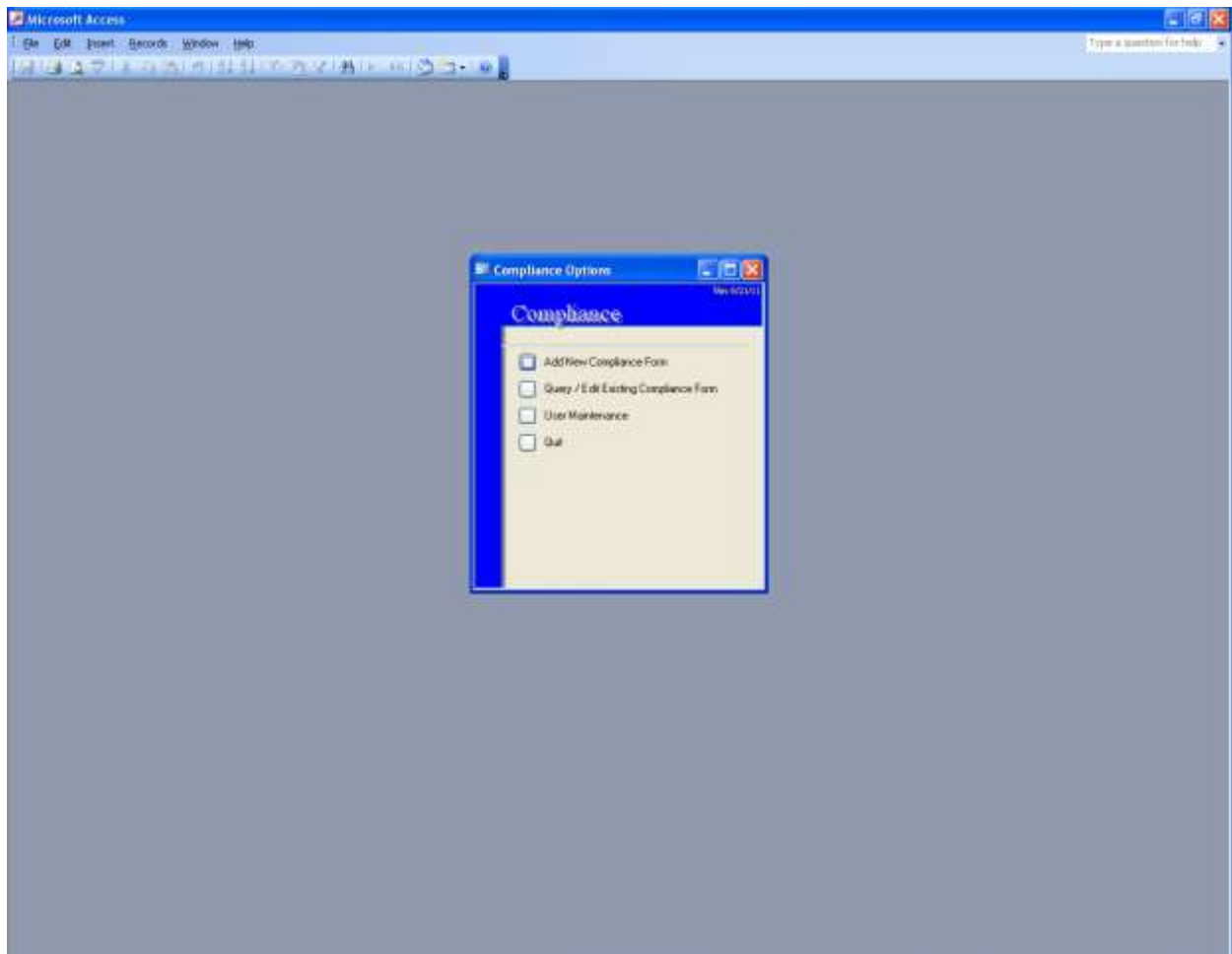
"Touching Lives Every Day"

COMPLIANCE ALERT 11-14

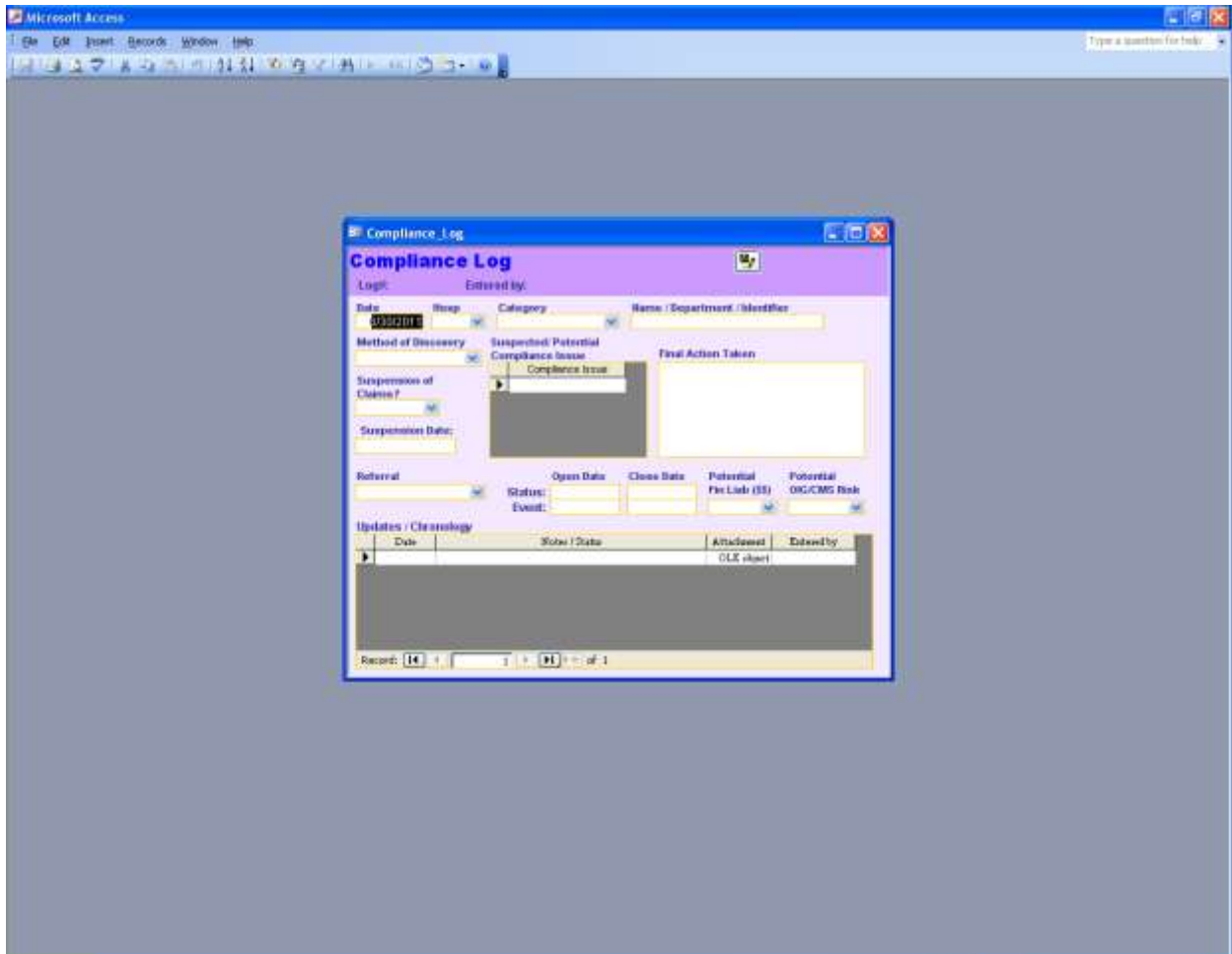
Announcing: New HHSC Compliance Log

Beginning July 1, 2011, HHSC compliance officers will be entering all compliance issues into a common log used system wide. With support from the HHSC's Board Audit and Compliance Committee and the Regional Compliance Officers, this new log will allow the entering, tracking, and collection of important compliance-related data. The new system will also allow the formation of standardized reports for RCEOs, Regional Boards, the Audit and Compliance Committee, and the HHSC Board.

The screen below illustrates (albeit too small) the opening screen for the new log.



The screen below depicts (apologies--still too small) the main data elements that can be entered and tracked. Information tracked includes facility, category of issue (physician, vendor, employee, etc.), how the issue was discovered, whether claims were suspended, and actions taken. At the specific request of the Audit and Compliance Committee, the log will allow the assessment of high, medium, or low risk for financial loss and/or OIG/CMS action.



This new log was created internally with no additional resources. James Pang in HHSC's Corporate Financial Department was instrumental in working on this. With this log, we can change it as the need arises.

The new log allows better systematic tracking of all issues on both regional and system levels. Thanks to James Pang, the RCOs, and the members of the Audit and Compliance Committee for their ideas and support.